



# 1 Idaho Court

Wycombe Road  
Prestwood  
Buckinghamshire  
HP16 0NZ

**PRICE ... £300,000 ... Leasehold**

- 2 bedroom first floor apartment
- Living room with terrace
- Long lease
- Carport and allocated parking
- No onward chain



## PROPERTY FACTS

A rarely available, two bedroom apartment in the heart of Prestwood village. This smart and well maintained flat offers a spacious rear aspect sitting room with patio doors out onto a terrace, a master bedroom with a range of built in wardrobes, a second double bedroom, a well fitted kitchen with a front outlook and a modern bathroom. The apartment is offered with no onward chain.

## LOCATION FACTS

Prestwood village centre has an excellent range of day to day facilities available including a variety of local shops ie Butchers, Bakers, Newsagents, Post Office, Chemist, Florist and Supermarket together with Doctors' and Dentists' surgeries. There are local schools for children up to the age of 11 years. For secondary education, Prestwood lies in the catchment area for the Amersham/Chesham and Aylesbury Grammar Schools and The Royal Grammar School for boys in High Wycombe. The Misbourne School in Great Missenden also offers schooling for 11-18 year olds. Private schools nearby include The Gateway in Great Missenden and Pipers Corner for girls in Great Kingshill. Nearby, Great Missenden also offers a main line rail link into Central London which is ideal for the commuter (approximately 35 minutes). For more extensive requirements both High Wycombe and Amersham are approximately 5 miles from Prestwood.

## ACCOMMODATION IN BRIEF

Entrance hall | Kitchen | Sitting room |  
Two double bedrooms | Bathroom |  
Terrace | Carport | Parking

## ADDITIONAL INFORMATION

Council Tax Band D | EPC band C | 983 years remaining on lease | Gas central heating

## DIRECTIONS

From our offices in Prestwood follow the parade of shops along the High Street. Idaho Court will be found on the left hand side, just past the opticians.

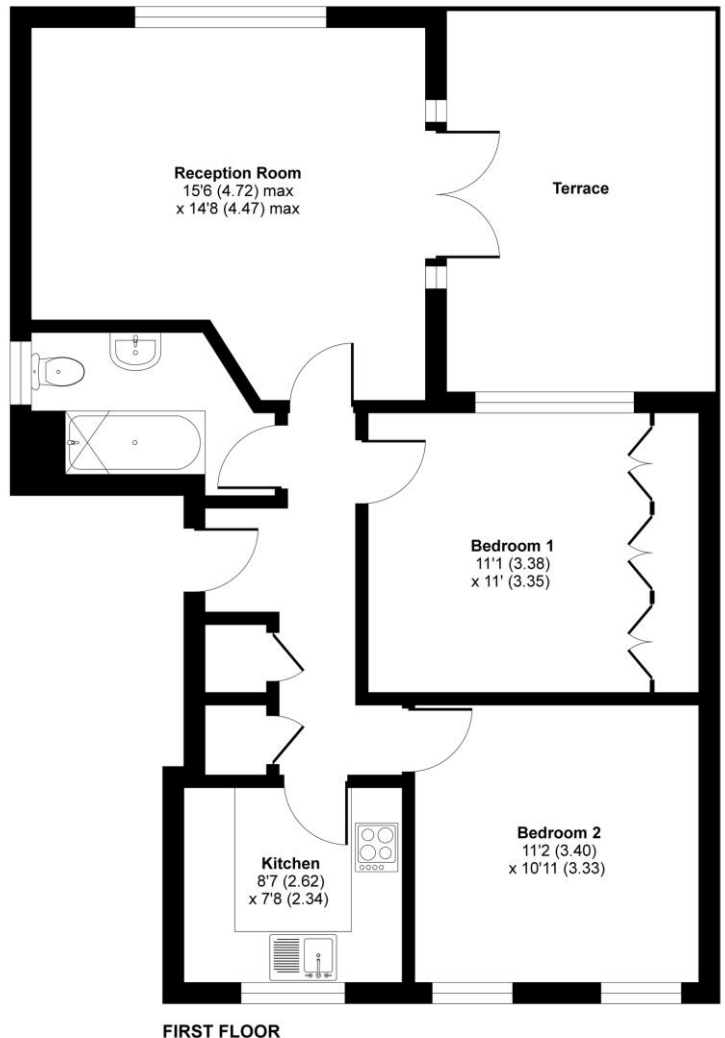
### Disclaimer

Whilst we endeavour to make our sales details accurate and reliable they should not be relied on as statements of representation of fact and do not constitute any part of an offer or contract.



## Prestwood, Great Missenden, HP16

Approximate Area = 693 sq ft / 64 sq m  
For identification only - Not to scale



Floor plan produced in accordance with RICS Property Measurement Standards incorporating International Property Measurement Standards (IPMS2 Residential). © nichecom 2020. Produced for Wye Residential LLP. REF: 650294

120 High Street, Prestwood, Bucks, HP16 9HD  
01494 868 000  
prestwood@wyecountry.co.uk  
wyecountry.co.uk

